

FLEX SPACES FOR LEASE

In the Heart of SoDo's Stadium District

1020 & 1022 1ST AVE S, SEATTLE WA 98134



Property Highlights

FUNCTIONAL DESIGN

INSPIRING SPACES: Spacious interiors bathed in natural light offer endless possibilities for businesses of all sizes, from dynamic startups to established industry leaders.

ACCESSIBILITY

LOGISTICS MADE EASY: A dedicated freight elevator seamlessly accommodates the transport of materials and equipment, perfect for light manufacturing, stylish showrooms, or creative studios.

LOCATION ADVANTAGE

DYNAMIC HUB: Immerse your business in the heart of SoDo's vibrant energy, benefiting from the excitement of game days and the steady foot traffic of a thriving district.

HISTORIC CHARM

INDUSTRIAL CHIC: Experience the allure of the building's classic architecture, creating a unique and inspiring atmosphere that blends the area's rich history with modern innovation.

EASY HIGHWAY ACCESS

PRIME LOCATION: Enjoy effortless commuting with convenient access to WA-99 and I-5, plus a Transit Score® of 99.



FOR MORE INFORMATION
CONTACT

CHASE SILVER
425.326.0766
csilver@orioncp.com

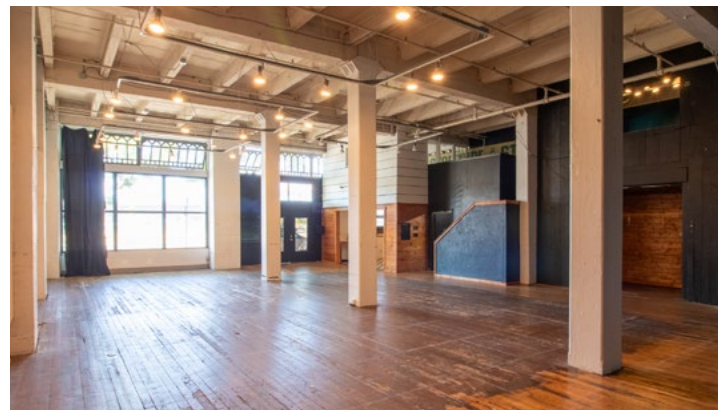
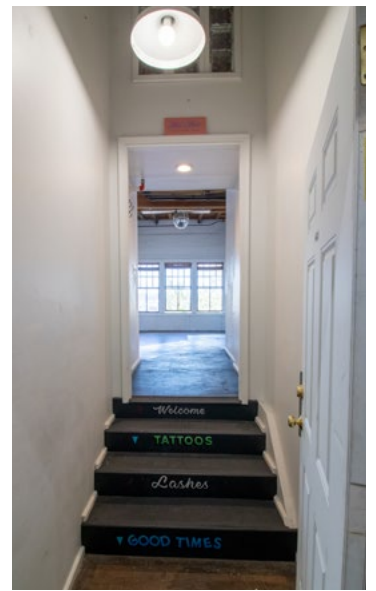
1218 Third Ave // Suite 2200
Seattle, WA 98101
www.orioncp.com

ORION
COMMERCIAL PARTNERS

FLEX SPACES FOR LEASE

In the Heart of SoDo's Stadium District

1020 & 1022 1ST AVE S, SEATTLE WA 98134



FOR MORE INFORMATION
CONTACT

CHASE SILVER
425.326.0766
csilver@orioncp.com

1218 Third Ave // Suite 2200
Seattle, WA 98101
www.orioncp.com

ORION
COMMERCIAL PARTNERS