

Office Space For Lease

SUITE 201 | 9,250 SF | AVAILABLE AUGUST 1ST, 2025

801 S FIDALGO ST, SEATTLE, WA 98108



Building Highlights

Located in Seattle's Georgetown neighborhood known for its artistic and industrial vibe.

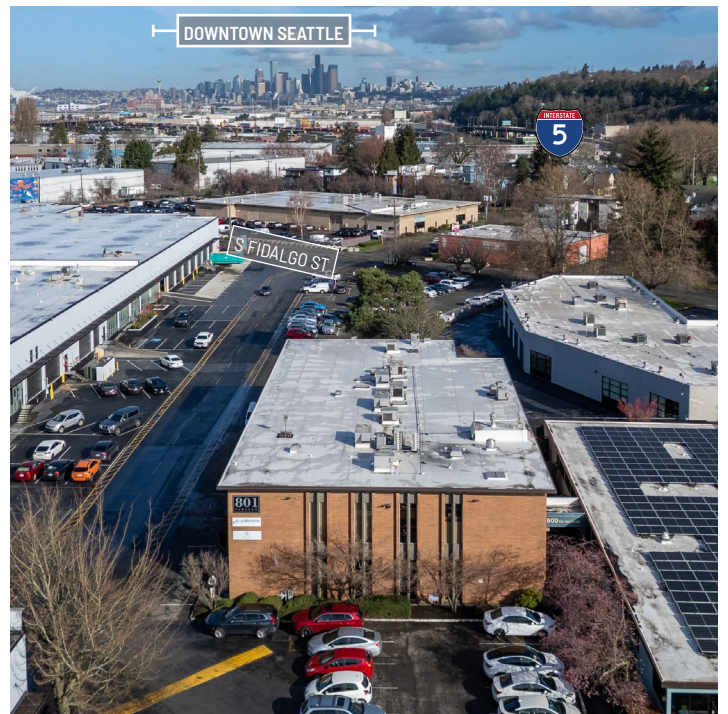
Easily accessible to all the major freeways with on/off ramps to I-5 and Hwy 99 less than 0.6 mile away.

Free Surface Parking: 4.0/1,000 SF

Many trendy nearby restaurants and cafes for employees

Less than 10 minutes drive to downtown Seattle

15 minutes to Seattle-Tacoma International Airport



FOR MORE INFORMATION
CONTACT

CHASE SILVER
425.326.0766
csilver@orioncp.com

MATTHEW HINRICHS
206.445.7663
mhinrichs@orioncp.com

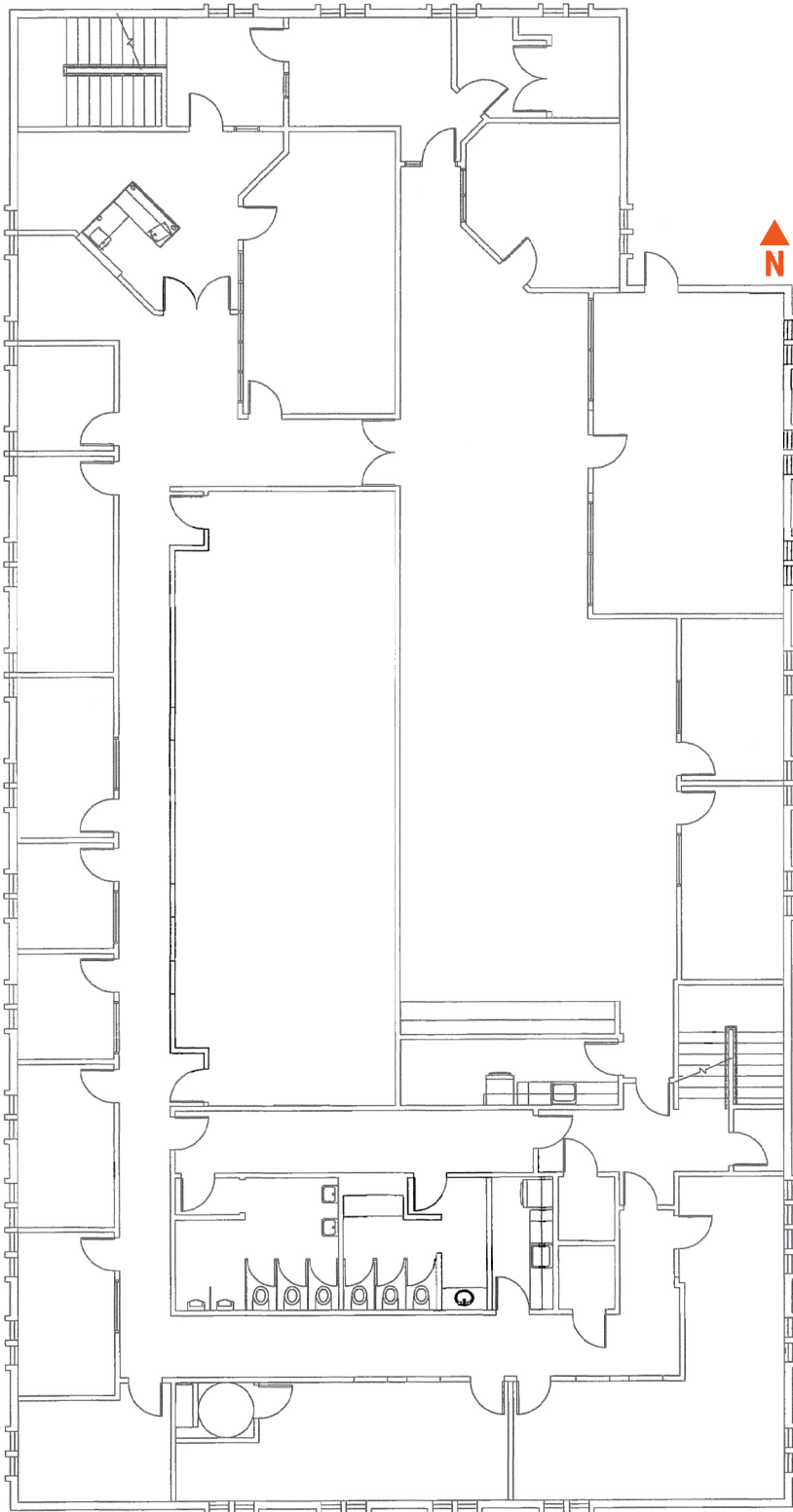
1218 Third Ave // Suite 2200
Seattle, WA 98101
www.orioncp.com

ORION
COMMERCIAL PARTNERS

Office Space For Lease

SUITE 201 | 9,250 SF | AVAILABLE AUGUST 1ST, 2025

801 S FIDALGO ST, SEATTLE, WA 98108



Space Highlights



AVAILABLE SPACE: 9,250 SF

AVAILABLE: AS OF AUGUST 1ST

A MIX OF OFFICE & OPEN CONCEPT

HIGH CEILINGS

24/7 ACCESS

CALL BROKER FOR RATES

The information contained herein was obtained from sources believed reliable; however, ORION Commercial Partners LLC makes no guarantees, warranties or representations as to the completeness or accuracy thereof. The presentation of this property is submitted subject to errors, omissions, change of price or conditions prior to sale or lease, or withdrawal without notice.

FOR MORE INFORMATION
CONTACT

CHASE SILVER
425.326.0766
csilver@orioncp.com

MATTHEW HINRICHS
206.445.7663
mhinrichs@orioncp.com

1218 Third Ave // Suite 2200
Seattle, WA 98101
www.orioncp.com

ORION
COMMERCIAL PARTNERS

