

FOR SALE \$5,870,000

THE BELLTOWN COLLECTIVE

Retail & Commercial Condo // 2231 1st Ave, Seattle, WA 98121



PROPERTY HIGHLIGHTS

Creative retail/commercial space with high ceilings, hard surface floors, unique design elements, and sprinklered basement

Main Floor:	6,276 RSF
Lower Level:	5,700 RSF
Basement:	5,324 RSF
TOTAL RSF	17,300 RSF

In the heart of one of Seattle's most historic and vibrant downtown neighborhoods

Two blocks from renowned venue
The Crocodile

Walk Score® 97: Walker's Paradise
Transit Score® 100: Rider's Paradise

Inquire about leasing and possible termination of existing lease



DAN FOSTER
206.445.7662
dfoster@orioncp.com

MATTHEW HINRICHS
206.445.7663
mhinrichs@orioncp.com

1218 Third Ave // Suite 2200
Seattle, WA 98101
www.orioncp.com

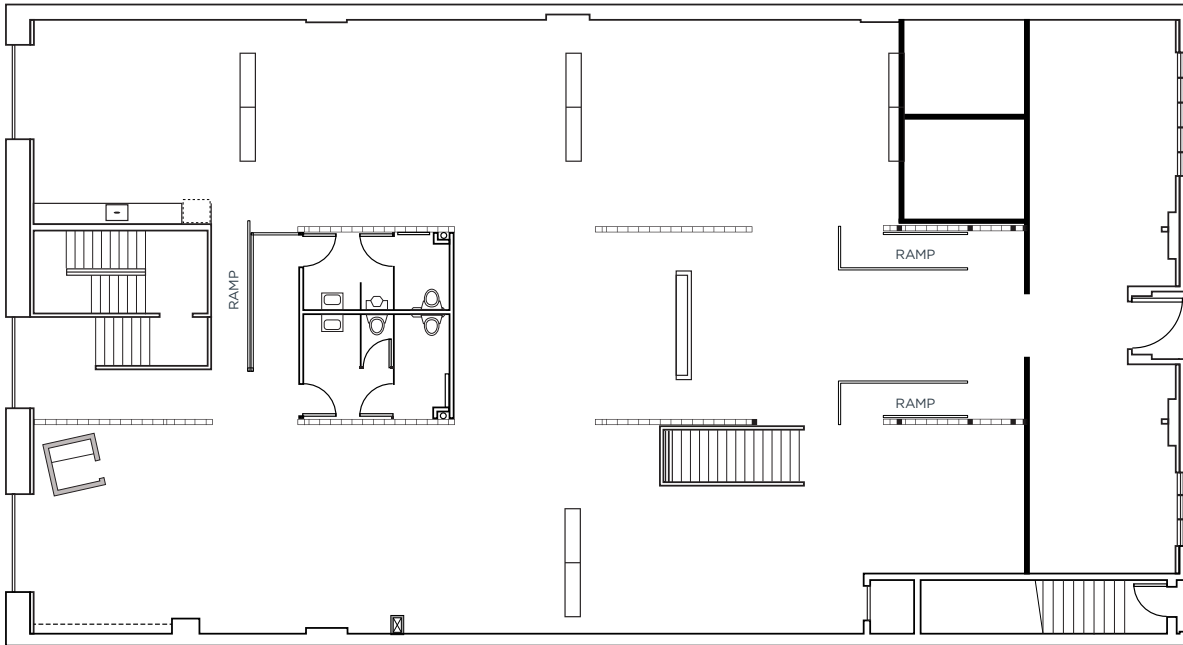
ORION
COMMERCIAL PARTNERS

FOR SALE \$5,870,000

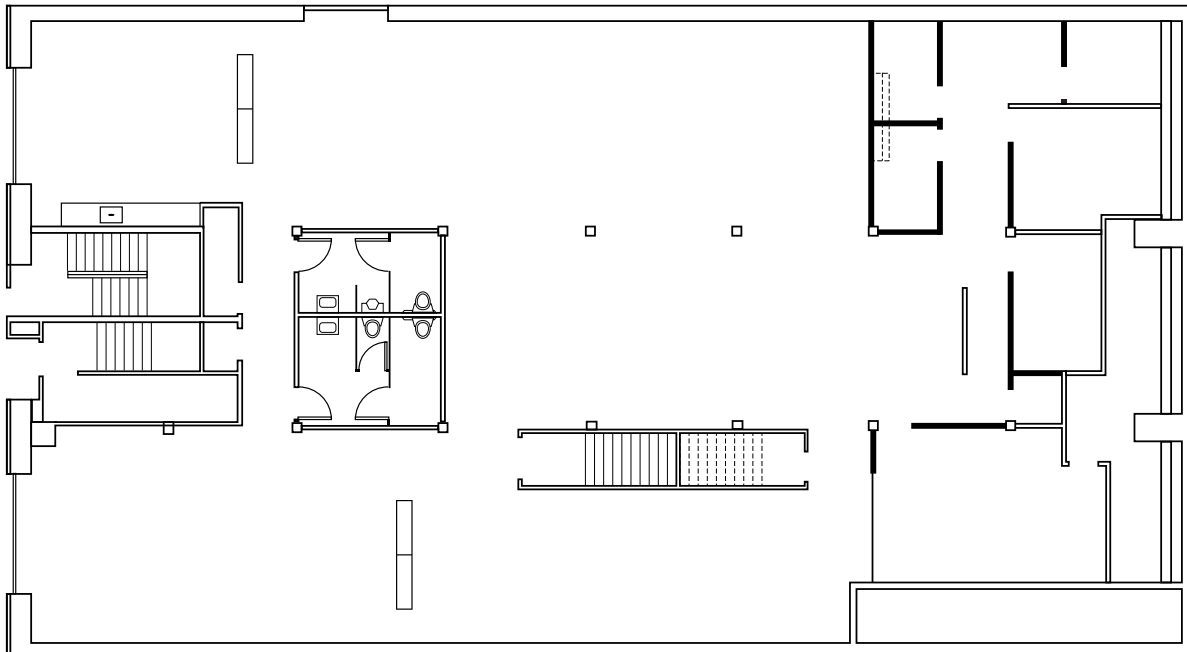
THE BELLTOWN COLLECTIVE

Retail & Commercial Condo // 2231 1st Ave, Seattle, WA 98121

MAIN LEVEL: 6,726 RSF



LOWER LEVEL: 5,700 RSF



Basement Floor Plan Available Upon Request



DAN FOSTER
206.445.7662
dfoster@orioncp.com

MATTHEW HINRICHS
206.445.7663
mhinrichs@orioncp.com

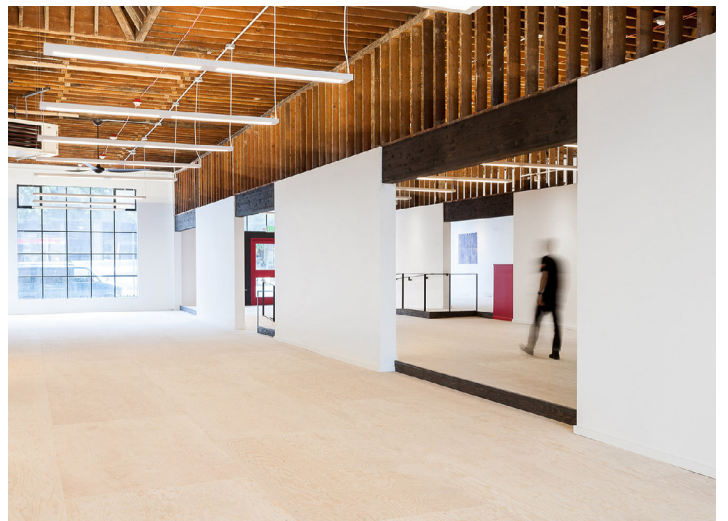
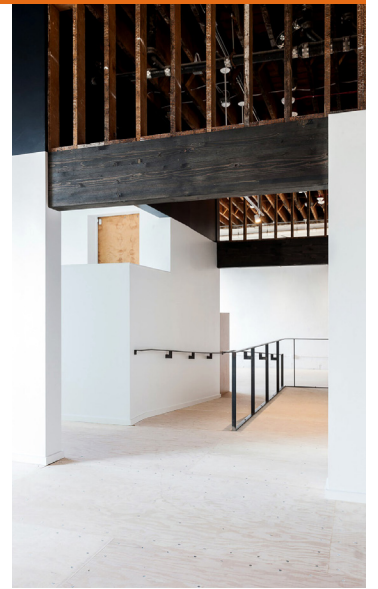
1218 Third Ave // Suite 2200
Seattle, WA 98101
www.orioncp.com

ORION
COMMERCIAL PARTNERS

FOR SALE \$5,870,000

THE BELLTOWN COLLECTIVE

Retail & Commercial Condo // 2231 1st Ave, Seattle, WA 98121



DAN FOSTER
206.445.7662
dfoster@orioncp.com

MATTHEW HINRICHS
206.445.7663
mhinrichs@orioncp.com

1218 Third Ave // Suite 2200
Seattle, WA 98101
www.orioncp.com

ORION
COMMERCIAL PARTNERS

FOR SALE \$5,870,000

THE BELLTOWN COLLECTIVE

Retail & Commercial Condo // 2231 1st Ave, Seattle, WA 98121

ABOUT BELLTOWN

EXPLORE: Urban nature seekers can explore the Olympic Sculpture Park (2901 Western Ave), with its 20 contemporary sculptures. Watch artisans create stunning works through the windows at the Seattle Glassblowing Studio (2227 5th Ave). In the evening, check the lineup at storied

venue The Crocodile (2505 1st Ave) or the legendary Moore Theatre (1932 2nd Ave), which opened its doors in 1907 and is Seattle's oldest active theater.

EAT & DRINK: Start the morning with mochi doughnuts from Dahlia Bakery. Dive into bowls and choripan sandwiches at Garzón, a Latinx street food spot inside the mural-filled Black

Cat Bar. The colorful patio at Bangrak Market. On the sweet side, stop by La Parisienne French Bakery for fluffy croissants and custardy canelés.

SHOP: Browse chic attire, art and accessories. Music lovers can dig through crates records at Singles Going Steady. Sniff along to the perfect candle scent at Noir Lux Candle Co.

